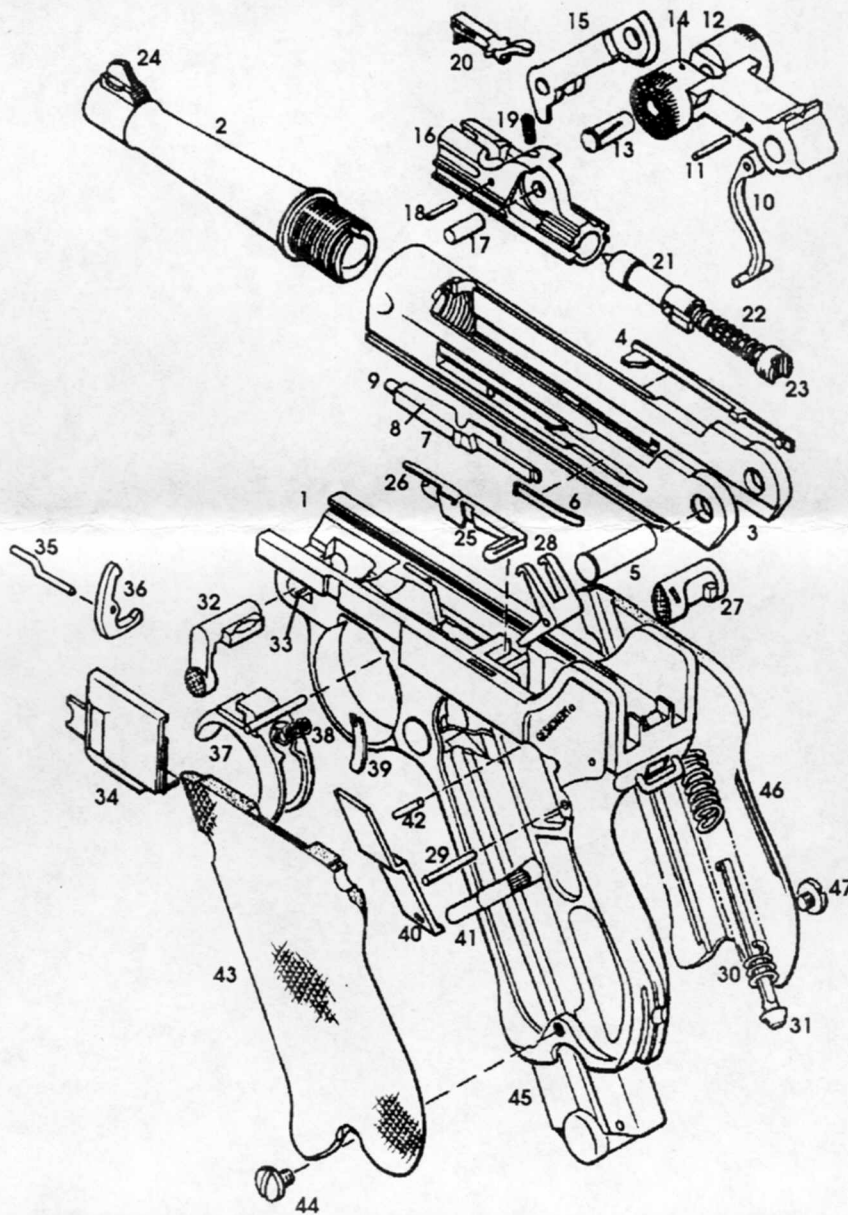


Luger Parabellum



WARNING:

Make sure the gun is entirely unloaded before starting the disassembly; visually check some rounds can hide.

Read every instruction carefully using the picture only as a reference.

- 1 Frame
- 2 Barrel
- 3 Receiver
- 4 Ejector
- 5 Receiver Axle
- 6 Trigger Bar Spring
- 7 Trigger Bar
- 8 Trigger Bar Plunger Pin
- 9 Trigger Bar Plunger (spring not shown)
- 10 Coupling Link
- 11 Coupling Link Pin
- 12 Rear Toggle Link
- 13 Toggle Axle
- 14 Toggle Axle Pin
- 15 Forward Toggle Link
- 16 Breechblock
- 17 Breechblock Pin
- 18 Extractor Pin
- 19 Extractor Spring
- 20 Extractor
- 21 Firing Pin
- 22 Firing Pin Spring
- 23 Firing Pin Spring Guide

- 24 Front Sight
- 25 Hold Open Latch
- 26 Hold Open Latch Spring
- 27 Magazine Catch
- 28 Recoil Lever
- 29 Recoil Lever Pin
- 30 Mainspring
- 31 Mainspring Guide
- 32 Locking Bolt
- 33 Locking Bolt Spring
- 34 Trigger Plate(sideplate)
- 35 Trigger Lever Pin
- 36 Trigger Lever
- 37 Trigger
- 38 Trigger Spring
- 39 Magazine Catch Spring
- 40 Safety Bar
- 41 Safety Catch
- 42 Safety Pin
- 43 Grip, Left
- 44 Grip Screw, Left
- 45 Magazine
- 46 Grip, Right
- 47 Grip Screw, Right

RADOCY
1 800 356 4759

