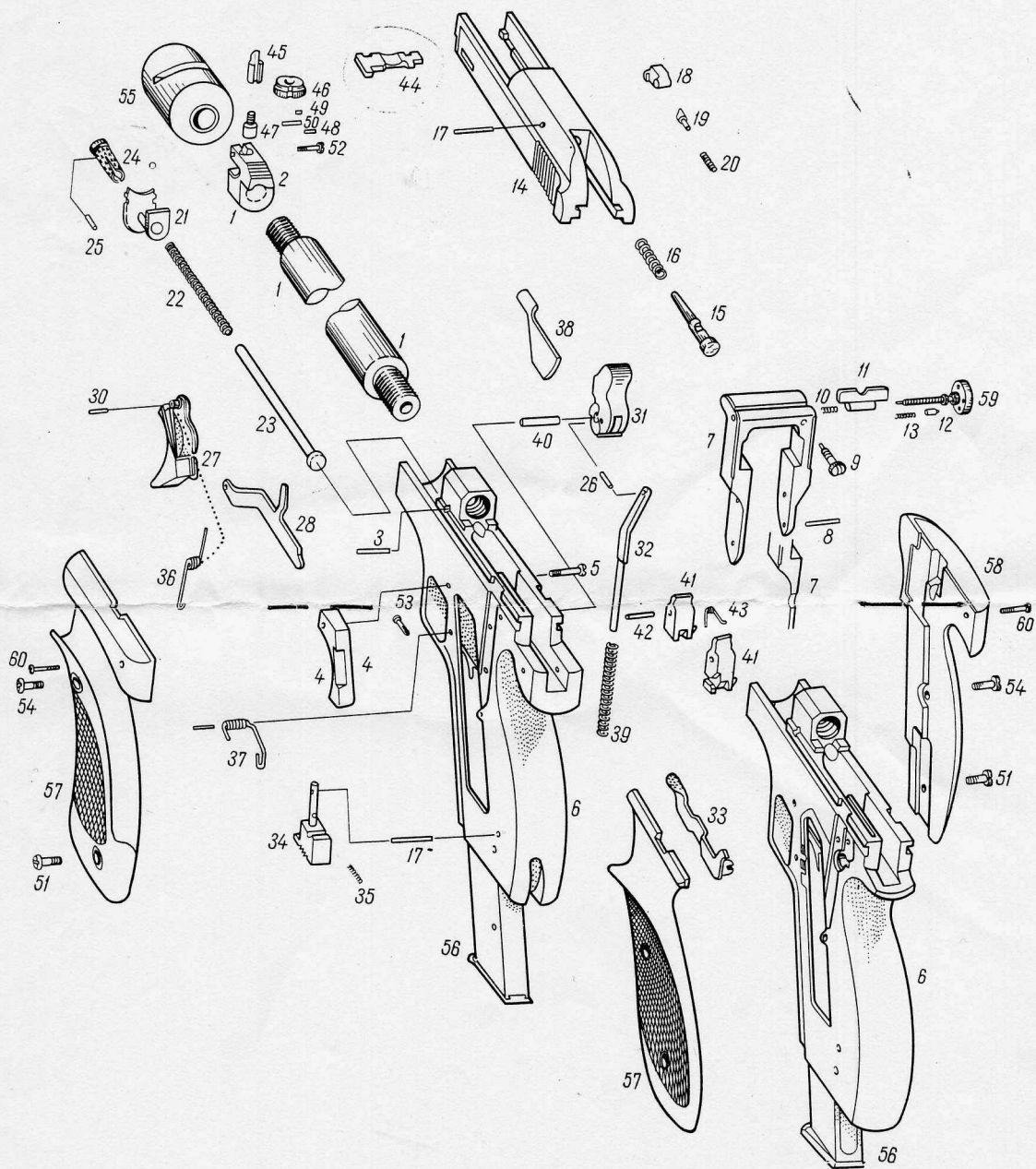


# MARGOLIN RAPID-FIRE PISTOL, MODEL "VOSTOK" МЦ AND МЦУ



# VOSTOK PISTOLET A TIR RAPIDE MARGOLINE MODELES МЦ ET МЦУ

## TECHNICAL DATA

	The MŁ	The MŁY
Calibre . . . . .	.22 l. r.	.22 short
Number of grooves . . . . .	6	6
Right-hand twist . . . . .	400 mm per turn	400 mm per turn
Barrel length with muzzle brake, mm . . . . .	186	186
Barrel length without muzzle brake, mm . . . . .	160	160
Sight radius, mm . . . . .	190	190
Overall length with muzzle brake, mm . . . . .	300	300
Overall height with palm rest, mm . . . . .	146	140
Width, mm . . . . .	50	50
Distance between foresight and trigger guard (in accordance with the requirements of the International Shooting Union), mm . . . . .	40	40
Capacity of magazine . . . . .	6	6
Weight of magazine full, g . . . . .	102	77
Weight of magazine empty, g . . . . .	85	56
Total weight, with full magazine and muzzle brake, kg . . . . .	not over 1.2	not over 1.2
Barrel weights (two), g . . . . .	50;100	50;100
Trigger pull, kg . . . . .	0.5-1.0	0.5-1.0
Foresight, changeable, micrometer click-adjustment		
Rear sight, changeable, micrometer click-adjustment		

## PISTOL OPERATION

After the shot has been fired the slide travels backward causing the hammer to turn on its pin and go down. The extractor ejects the fired case from the chamber, and the case running against the ejector bracket is forced up to the right. The hammer cocking cam engages behind the sear's sharp edge and is retained in the cocked position. The mainspring is compressed. The slide cotter retracts the retaining block thus compressing the recoil spring. As the slide travels rearward the magazine follower presses the cartridges upward. The next cartridge going up stops at slide level. With the slide travelling forward the feed rib forces the upper cartridge from the magazine directing it to the chamber. The extractor hook engages behind the cartridge rim. Having reached its extreme front position the slide stops and locks

the barrel. The locking of the barrel is ensured by the action of the recoil spring and the inertia of the slide weight.

The cycle will be repeated every time the trigger is pressed until the magazine is empty. With the hammer released, the trigger retracts the trigger bar. It presses the sear side lug (pin) disengaging the sear from the hammer cocking cam. The hammer disengaged from the sear turns on its pin under the action of the mainspring and vigorously strikes against the firing pin. Upon the impact the firing pin with the striker briskly slides forward, the striker comes out of the slide body hole and thrusts against the case rim. Thus the shot is fired.

The left-hand side of the MŁ pistol carries the safety lug. With the lug suppressed into its first fixed position the hammer is set at safety. In this position the shot cannot be fired. As the safety lever is forced all the way down and the slide all the way to the rear the latter engages with the safety lug. Disengagement of the slide is effected by turning the safety lug to its uppermost position.

Adjustment of the sights of both pistols (the foresight in elevation and the rear sight in windage) is done by click-adjusting screws. One click is equal to 1/4 revolution of the adjusting screw which corresponds to the rear sight travelling 0.088 mm horizontally and the foresight 0.088 mm vertically.

## PISTOL PARTS

Nos.	Description	Parts number		
		MŁ MŁY	MŁ	MŁY
1	Barrel		1-1	1-1
2	Foresight housing	1-3		
3	Barrel pin	1-4		
4	Side plate	1-6		
5	Side plate screw	1-7		
6	Receiver		1-8	1-8
7	Rear sight bridge	1-9		
8	Rear sight bridge pin	1-10		
9	Rear sight adjustment retaining screw	1-12		
10	Rear sight adjustment spring	1-13		